

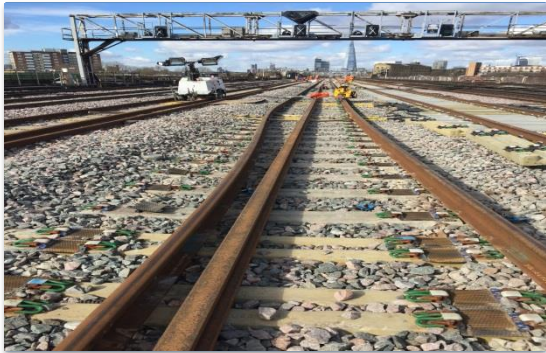
INCIDENT

Ankle Injury during stressing of rails

BRIEF OVERVIEW OF INCIDENT

- On 9th March 2017 at around 11:45hrs, the track team were stressing 'Long welded rails' between Gemini and Spa Road on Line 6 at XTD5500. (iSMS reference number 578315).
- The rails had been installed overnight during colder weather, and the weather was reportedly warm during this activity. As the IP unclipped and jacked up the running rail the rail fell off the jack (likely due to thermal expansion), hitting IP's ankle because his leg was between the running rail and conductor rail in the 4'. The rail finally came to rest on IP's safety boot toe cap, trapping his right foot.
- IP's colleagues reacted immediately to free his entrapped right foot using a rail bar to prise off the rail.
- IP was taken to the nearby A&E where he was diagnosed with soft tissue injury to his ankle. IP was giving pain killers and advised rest for one week.

BUSINESS UNIT	Rail Systems
PROJECT LOCATION	Thameslink KO2; Line 6 at XTD 5500
INCIDENT TYPE	Injury
LEAD INVESTIGATOR	Brian Duffy
INVESTIGATION H&S PARTNER	Joseph Hagan



Damaged Safety Boot

WILL IT AFFECT AFR? (EXPLAIN)	
YES/NO	<input type="checkbox"/> Injry
WILL IT BE A RIDDOR? (EXPLAIN)	
YES/NO	<input checked="" type="checkbox"/> >7 day injury
ABSENCE	
Days absent (from completion of this Fast Facts)	05
Days absence predicted	07

RIDDOR

HiPO

LTI

FAST FACTS VERSION CONTROL

DATE ISSUED: 14/03/2017